



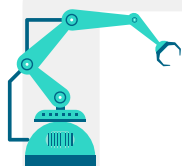
ABOUT **OLIFLOW**

We specialize in all things hydraulic. We design, build & service custom hydraulic cylinders, complex power units, advanced sealing solutions for hydraulic and pneumatic systems, and custom hydraulic manifolds.

Our strength lies in our fundamental understanding of hydraulics and our ability to tailor solutions to meet each client's specific needs. With a modern machine shop, an experienced design and engineering team, and a fully equipped hydraulic assembly facility, we ensure top-quality results.

Through our parent company, we work with top hydraulic component manufacturers, combining their expertise with ours to deliver innovative, reliable, and high-performance systems.

WHAT WE HAVE?



STATE OF THE ART
MACHINE &
FABRICATION SHOP



DEDICATED ASSEMBLY &
PRESSURE TEST AREA



EXPERIENCED
ENGINEERING TEAM



APPROVED
WELDERS



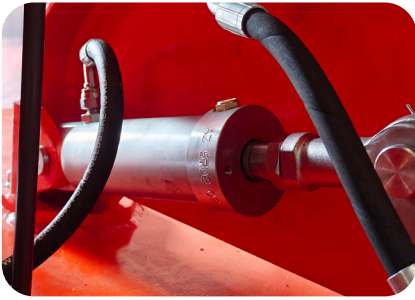
PARTNERSHIP
WITH OEMS



IN-HOUSE SEAL
DIVISION



PRODUCTS



1

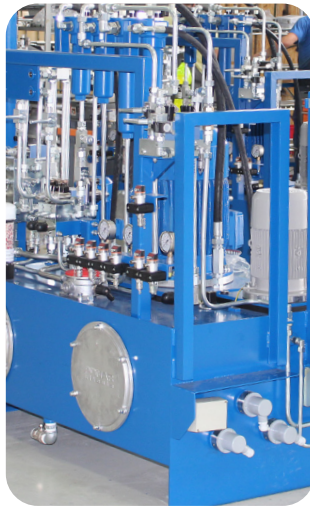
HYDRAULIC
CYLINDER

5

HYDRAULIC
COMPONENT

2

HYDRAULIC
POWERUNIT



3

HYDRAULIC
MANIFOLD



4

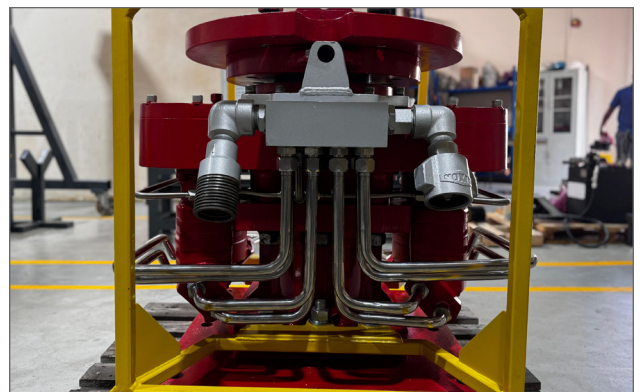
HYDRAULIC
SEAL

ON-SITE SERVICES

HYDRAULIC SYSTEM COMMISSIONING
& TROUBLESHOOTING



HYDRAULIC HOSE &
PIPING SOLUTIONS



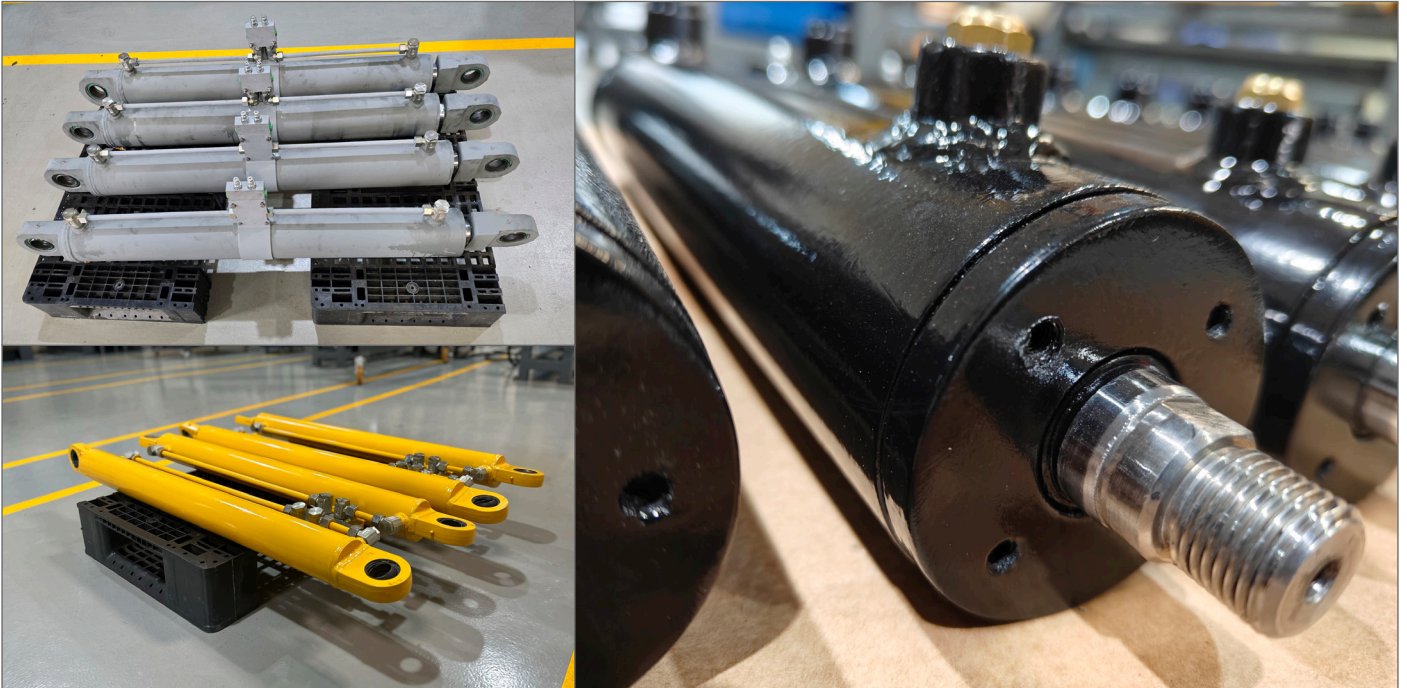


Hydraulic **CYLINDERS**



STANDARD HYDRAULIC CYLINDERS

Available: **New/Service**



We design, manufacture, and service **high-performance hydraulic cylinders** engineered for demanding industries such as **Subsea, Oil & Gas, Mining, Construction, Aerospace, and Defence**.

Our cylinders are available in **single-acting and double-acting** configurations with a wide selection of mounting options, including:

Both End Male Clevis | Both End Bush | Threaded Rod End | Female Forks | Trunnion on Tube

BUILT FOR PERFORMANCE & EFFICIENCY

Every cylinder is constructed using premium materials and precision-machined components to ensure durability and long service life:

- ▶ Honed Tubes for smooth operation
- ▶ Hard Chromed & Nickel-Chromed Rods for wear and corrosion resistance
- ▶ Pre-Machined Pistons & Gland Nuts for consistent performance

OPTIMIZED PRODUCTION & FAST DELIVERY

With a streamlined design-to-manufacturing process, we ensure quick turnaround times without compromising quality.

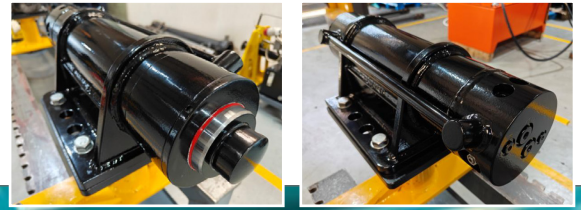
TECHNICAL SPECIFICATIONS

BORE SIZE: 40 mm to 300 mm ▶ **ROD DIAMETER:** 12 mm to 200 mm
STROKE LENGTH: Up to 7 meters ▶ **PRESSURE RATING:** Up to 350 bar



Hydraulic Cylinders with **INTEGRATED CARTRIDGE VALVE**

Available: **New/Service**



We design and manufacture high-performance hydraulic cylinders with built-in cartridge valves, engineered for demanding applications across industries such as Subsea, Oil & Gas, Mining, and Construction Equipment.

ADVANCED VALVE INTEGRATION FOR SUPERIOR FUNCTIONALITY

Our cylinders incorporate embedded cartridge valves that enhance system control and efficiency, including:

- ▶ Load Holding: Counterbalance Valves & Pilot-Operated Check Valves
- ▶ Velocity Control: Flow Control Valves
- ▶ Cushioning Operation: Phaser Check Valves
- ▶ Pressure Management: Relief Valves

WHY CHOOSE OUR INTEGRATED VALVE CYLINDERS?

COMPACT & EFFICIENT: Eliminates the need for external valve assemblies, reducing space requirements and potential leakage points.

ENHANCED RELIABILITY: Integrated design ensures robust performance in harsh operating conditions.

SIMPLIFIED INSTALLATION: Fewer external components lead to reduced piping and faster assembly.

STEEL & CEMENT PLANTS HYDRAULIC CYLINDERS

Available: **New/Service**



Our hydraulic cylinders are engineered for extreme duty, built to perform reliably in the harshest environments of steel and cement manufacturing plants. Designed to withstand continuous operation, high temperatures, abrasive conditions, and massive loads, these cylinders deliver long-lasting performance where downtime is not an option.

CYLINDERS FOR STEEL PLANTS

BLAST FURNACES: Withstand extreme heat and heavy static loads.

ROLLING MILL SHOP: Provide precision movement for consistent product quality.

STEEL MELTING SHOP: Ensure reliable operation in high-temperature, high-cycle environments.

DRI TOWERS: Built for uninterrupted heavy-duty service.

CYLINDERS FOR CEMENT PLANTS

VERTICAL ROLLER MILLS: Deliver smooth, high-force operation for maximum grinding efficiency.

KILN SECTIONS: Heat-resistant and rugged for prolonged performance under thermal stress.

CLINKER COOLERS: Designed for high-impact resistance in abrasive and dusty conditions.

BUILT FOR RELIABILITY

With carefully selected materials, precision machining, and robust sealing systems, our cylinders guarantee durability, efficiency, and long service life even under the most punishing plant conditions.



CLASS APPROVED HYDRAULIC CYLINDERS

Available: **New**



We design and manufacture **class-approved hydraulic cylinders** that comply with the stringent requirements of leading international marine classification bodies. These cylinders are built for offshore, shipboard, and subsea operations, where absolute reliability is essential.

ENGINEERING & VALIDATION

Our design team performs detailed **load calculations and buckling analysis** to validate cylinder strength under extreme forces. Each stage of the design is documented for full compliance with class standards.

SURVEYOR-SUPERVISED MANUFACTURING

Every stage of production — from raw material inspection to final assembly — is **witnessed and certified by classification surveyors**.

APPROVED WELDERS: Fabrication is carried out by certified welders under approved welding procedures.

MATERIAL TRACEABILITY: All steels, rods, and seals are fully documented with certificates.

TESTING & INSPECTION: Cylinders undergo hydrostatic and dimensional testing in the presence of surveyors to ensure compliance.

SPECIAL PURPOSE CYLINDERS FOR EXTREME OPERATING CONDITIONS

Available: **New**



Our hydraulic cylinders are engineered for extreme duty, built to perform reliably in the harshest environments of steel and cement manufacturing plants. Designed to withstand continuous operation, high temperatures, abrasive conditions, and massive loads, these cylinders deliver long-lasting performance where downtime is not an option.

CYLINDERS FOR STEEL PLANTS

BLAST FURNACES: Withstand extreme heat and heavy static loads.

ROLLING MILL SHOP: Provide precision movement for consistent product quality.

STEEL MELTING SHOP: Ensure reliable operation in high-temperature, high-cycle environments.

DRI TOWERS: Built for uninterrupted heavy-duty service.

CYLINDERS FOR CEMENT PLANTS

VERTICAL ROLLER MILLS: Deliver smooth, high-force operation for maximum grinding efficiency.

KILN SECTIONS: Heat-resistant and rugged for prolonged performance under thermal stress.

CLINKER COOLERS: Designed for high-impact resistance in abrasive and dusty conditions.

BUILT FOR RELIABILITY

With carefully selected materials, precision machining, and robust sealing systems, our cylinders guarantee durability, efficiency, and long service life even under the most punishing plant conditions.



LIQUID NITRIDE HYDRAULIC CYLINDERS

Available: **New**



We design and manufacture high-performance hydraulic cylinders engineered for corrosive and demanding environments, where protection against wear and chemical attack is critical. By combining specialized steel alloys with advanced surface treatments, these cylinders deliver long-lasting reliability and resistance.

KEY FEATURES

HIGH-STRENGTH STEEL ALLOY CONSTRUCTION: Ensures structural integrity under high loads and continuous operation.

STRESS-RELIEVED & HEAT-TREATED: Prevents material fatigue and enhances overall durability.

LIQUID NITRIDE COATING: Creates a hardened, corrosion-resistant surface that extends service life even in harsh operating conditions.





Hydraulic **POWERUNIT**



COMPACT HYDRAULIC POWER UNITS

Available: **New/Service**



MOTOR CAPACITY: 1.1 kW to 5.5 kW ▶ **TANK VOLUME:** 5 Ltrs to 50 Ltrs
PUMP DISPLACEMENT: 2.5 CC to 6 CC ▶ **PRESSURE RATING:** Upto 180 bar

Our compact hydraulic power units are designed for versatility, reliability, and performance across a wide range of applications. Available in both AC and DC motor options, each unit is built around a durable aluminium die-cast central manifold, supporting multiple standard valve configurations.

With a comprehensive stock of valves, pumps, motors, and reservoirs, we can rapidly configure and supply tailored powerpacks to meet specific application requirements. This ensures:

- ▶ Reliable operation under demanding conditions
- ▶ Reduced lead times through readily available components
- ▶ Cost-effective hydraulic solutions without compromising performance



STANDARD HYDRAULIC POWER UNITS

Available: **New/Service**



MOTOR CAPACITY: 1.1 kW to 22 kW ▶ **TANK VOLUME:** 40 Ltrs to 250 Ltrs
PUMP DISPLACEMENT: 2.5 CC to 30 CC ▶ **PRESSURE RATING:** up to 250 bar

Our standard hydraulic power units are developed to deliver dependable performance in large-scale industrial operations such as steel plants, cement mills, and other manufacturing environments. Each unit is configured by carefully evaluating the process requirements and tailoring the design to suit a wide range of applications. By integrating robust components with industry-focused engineering, these powerpacks provide consistent output, simplified maintenance, and long service life even in demanding operating conditions.

SKID TYPE HYDRAULIC POWER UNITS



MOTOR CAPACITY: 22 kW to 100 kW ▶ **TANK VOLUME:** 250 Ltrs to 2000 Ltrs
PUMP VOLUME: 20 CC to 100 CC ▶ **PRESSURE RATING:** Upto 350 bar

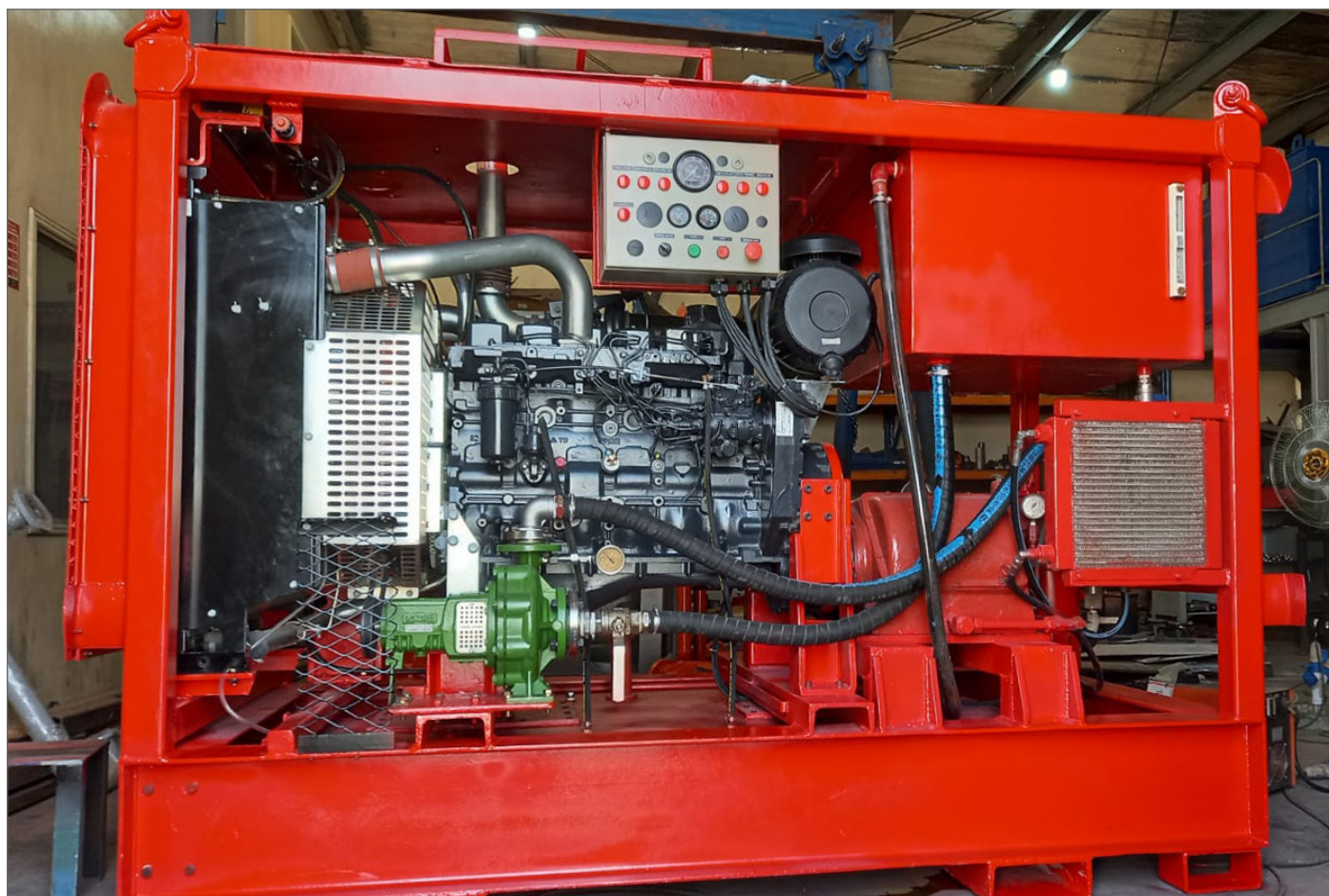
Our skid-mounted hydraulic power units are engineered for demanding applications in the marine, subsea, and oil & gas industries. Each unit is built on a robust skid frame equipped with forklift pockets and lifting eyes, designed in accordance with DNV 2.7-1 standards for safe handling and offshore compliance.

The hydraulic system is configured to ensure optimum flow, pressure control, and energy efficiency, supporting both heavy-duty continuous cycles and precise actuator control. Depending on operational needs, the units can be equipped with fixed displacement pumps for simplicity and reliability or variable displacement axial piston pumps for energy savings and dynamic performance.

Designed and manufactured entirely in-house, these power units integrate advanced filtration, cooling, and safety interlocks to guarantee clean oil, consistent performance, and extended equipment life. Built for harsh offshore environments, they deliver reliable hydraulic power, simplified maintenance, and long service life.

DIESEL OPERATED HYDRAULIC POWER UNITS

Available: **New/Service**



MOTOR CAPACITY: 22 kW to 100 kW ▶ **TANK VOLUME:** 250 Ltrs to 2000 Ltrs
PUMP DISPLACEMENT: 20 CC to 100 CC ▶ **PRESSURE RATING:** Upto 350 bar

Our diesel-powered hydraulic powerpacks are built for independence and mobility, making them the ideal choice for operations where access to electrical supply is limited or unavailable. Equipped with high-performance industrial diesel engines, they provide continuous hydraulic power in remote sites, offshore locations, and field environments.

The hydraulic circuits are engineered to ensure smooth flow delivery, accurate pressure control, and reliable operation across a wide range of applications. Depending on customer requirements, the units can be fitted with fixed displacement pumps for simplicity or variable displacement pumps for adaptive performance and energy efficiency.

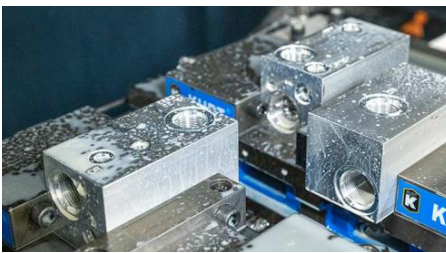
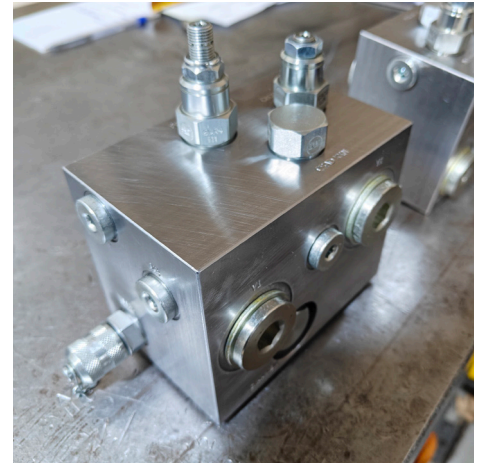
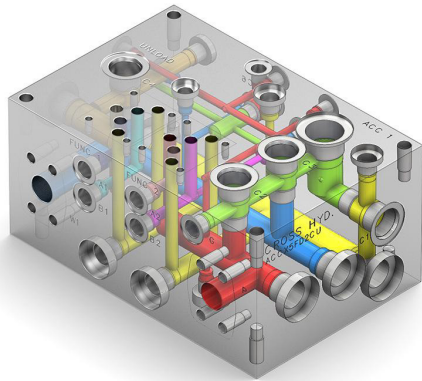
With integrated fuel management, cooling systems, and protective enclosures, these powerpacks are designed for endurance and safety under extreme operating conditions. Their portability and self-sufficiency make them especially suited for oil & gas, construction, marine deck equipment, and emergency back-up applications, where uninterrupted hydraulic power is critical.





Hydraulic **MANIFOLDS**





We design and manufacture custom hydraulic manifold assemblies engineered to simplify complex circuits and enhance overall system efficiency. By consolidating multiple valves and flow paths into a single compact block, our manifolds reduce piping, minimize potential leakage points, and deliver faster, more reliable system response.

With a state-of-the-art machining facility, dedicated OEM cavity tools, and a large inventory of cartridge valves, we are able to design and deliver tailored solutions with short lead times. Each manifold is optimized to its application—whether for precise control, load holding, or flow regulation—ensuring seamless integration into demanding hydraulic systems.

Our manifolds not only save space but also improve system performance, safety, and maintainability, making them the preferred choice across industries where durability and reliability are critical.

TECHNICAL HIGHLIGHTS

Materials:

Aluminium 6061-T6 | Steel EN8

Surface Treatments:

Anodizing | Zinc Plating | Blackening

Capabilities:

Integration of multiple cartridge valves | Compact and efficient circuit layouts | Reduced fittings and leakage points

Applications:

Industrial hydraulics | Mobile machinery | Marine and offshore systems | Process equipment



Hydraulic **SEALS**





Our Seal Division partners closely with customers across marine, steel, cement, extrusion, and heavy industrial sectors to design sealing solutions that meet their specific operating conditions. By understanding the application, working environment, and pressure requirements, we engineer seals that ensure maximum reliability, extended service life, and reduced downtime.

With in-house expertise in material selection and seal profile design, we deliver solutions capable of withstanding high pressures, extreme temperatures, and aggressive media. From high-performance polyurethane and PTFE seals to specialized elastomer blends, our products are developed to maintain integrity under the most demanding conditions.

TECHNICAL HIGHLIGHTS

SealTypes:

Piston, Rod, Wiper, Static, Guides, Back-up Rings

Materials:

Polyurethane | NBR | HNBR | FKM | PTFE Compounds

Performance:

High wear resistance | Low friction | Temperature & pressure stability

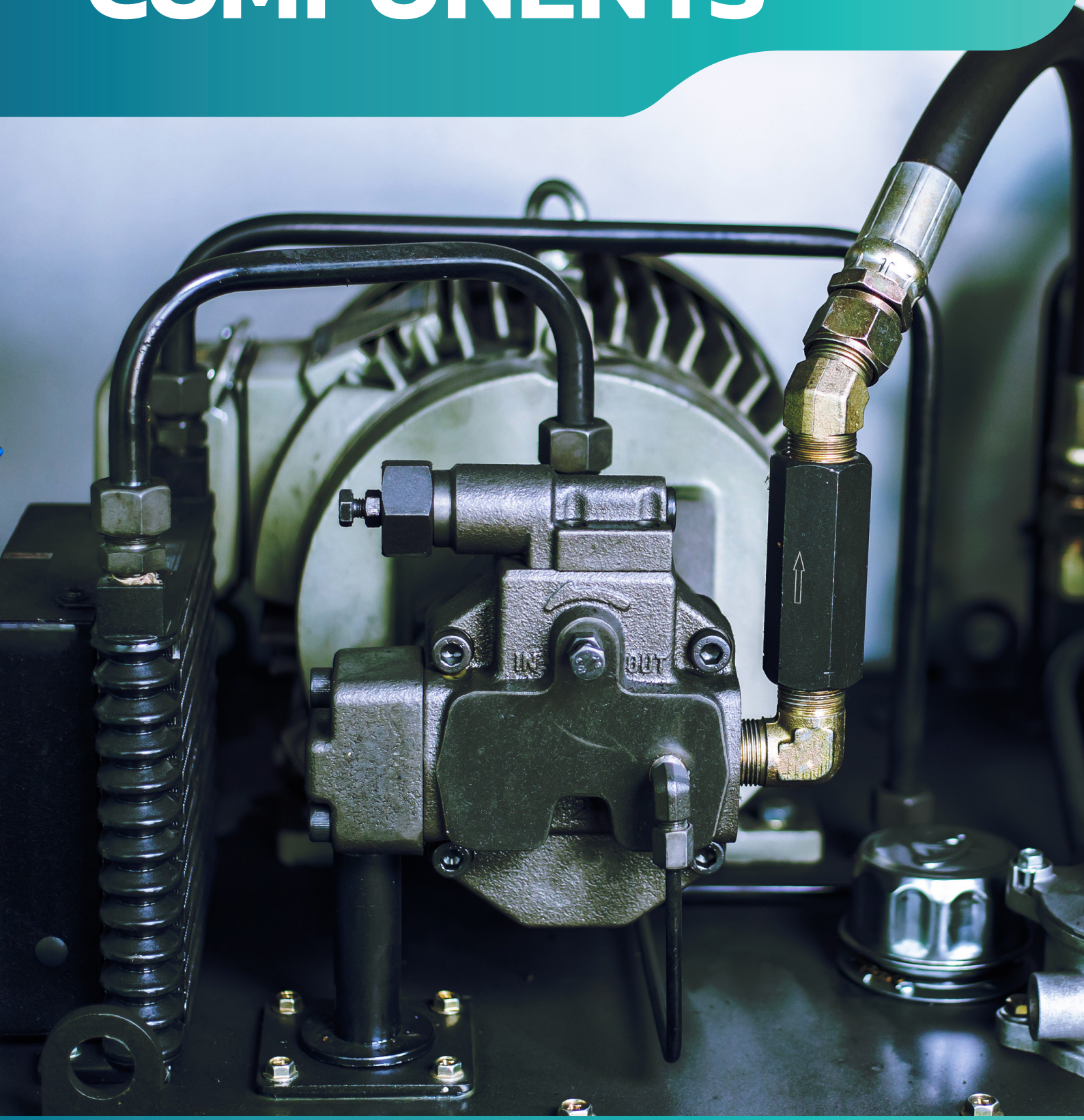
IndustriesServed:

Marine & Offshore | Steel & Cement | Extrusion & Process Equipment | Mobile Hydraulics

Our seal division combines advanced design capabilities with precision manufacturing, ensuring seals that not only perform but also extend the service life of hydraulic and pneumatic systems.



Hydraulic **COMPONENTS**





Gear Pumps | Vane Pumps | Axial Piston Pumps

We maintain a wide inventory of high-performance hydraulic pumps sourced from globally recognized manufacturers, ensuring quick availability and reliable solutions for diverse applications.

OUR PRODUCT RANGE INCLUDES:

Gear Pumps – Casappa

Compact, efficient, and durable gear pumps suited for mobile and industrial hydraulic systems. Known for consistent performance and long service life.

Vane Pumps – HOF

Smooth and quiet operation with excellent volumetric efficiency. Ideal for applications requiring stable flow and low noise levels.

Axial Piston Pumps – Kawasaki & Bosch Rexroth

High-pressure pumps designed for demanding applications. Available in swashplate and bent-axis designs, offering variable displacement options for energy-efficient performance.



HYDRAULIC VALVES



Inline valves | Sectional & Monoblock Valves | Cetop Type Valves

Our inventory includes a broad range of hydraulic valves from trusted global manufacturers, enabling precise control and reliable operation of hydraulic systems across industries. The selection covers a wide spectrum of flow, pressure, and directional control requirements:

Inline Valves – Oleodinamica

Designed for simple installation and dependable performance, offering reliable pressure and flow regulation in compact circuits.

Sectional & Monoblock Valves – Walvoil

Versatile solutions for mobile and industrial machinery, allowing multiple functions to be managed efficiently within a single assembly.

CETOP Type Valves – Ponar & Bosch Rexroth

High-quality stackable valves for standardized applications, ensuring easy interchangeability and system flexibility.

HYDRAULIC FILTERS



We stock a complete range of filtration solutions from leading brands such as MP Filtri, Filtrec, and Descase, ensuring hydraulic systems remain clean, efficient, and protected from premature wear. Our offering covers the full spectrum of hydraulic filtration needs:

Return Line Filters:

Maintain fluid cleanliness by capturing contaminants before oil re-enters the reservoir, ensuring long-term system reliability.

Suction Line Filters:

Protect pumps by removing impurities at the point of fluid intake, minimizing damage and extending pump life.

Pressure Line Filters:

Designed for high-pressure circuits, providing maximum protection for sensitive components such as valves and actuators.

Filler Breathers:

Prevent external contamination during tank filling and oil transfer, supporting clean reservoir management.

Desiccant Breathers:

Control moisture and airborne particles, extending oil life and reducing the risk of corrosion in hydraulic tanks.



HYDRAULIC MOTORS



We offer a comprehensive range of hydraulic motors from leading brands such as Galtech, M+S, and Danfoss, designed to deliver efficient power conversion for a wide variety of applications. Our portfolio covers different motor technologies to match diverse speed, torque, and performance requirements:

Gear Motors – Galtech Compact

Compact and robust motors designed for reliability and long service life. Ideal for applications requiring consistent performance and simple installation.

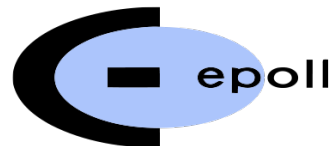
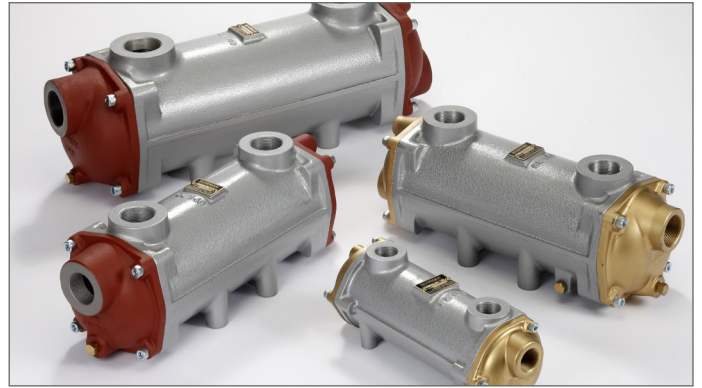
Orbital Motors – M+S

Low-speed, high-torque (LSHT) motors built for smooth operation and durability. Well-suited for mobile machinery, conveyors, and winch systems.

Piston Motors – Danfoss

High-efficiency motors capable of operating under extreme pressures. Engineered for precision control, excellent dynamic response, and demanding industrial or mobile environments.

HYDRAULIC ACCESSORIES



To complement our core product range, we maintain an extensive inventory of hydraulic accessories from world-renowned brands. These components play a vital role in ensuring efficient, safe, and reliable hydraulic system operation.

Air Blast Coolers – OesseHigh–

High-performance air-cooled heat exchangers designed to maintain optimum oil temperature in hydraulic systems, ensuring consistent efficiency and preventing overheating.

Water-Cooled Heat Exchangers – BowmanCompact

Compact and effective cooling solutions that use water as the heat exchange medium, offering excellent thermal management for heavy-duty industrial and marine systems.

Bell Housings & Couplings – KTR

KTR Precision-engineered components that ensure accurate alignment and smooth power transmission between electric motors and hydraulic pumps, reducing vibration and extending service life.

Accumulators – Epoll

Epoll Reliable hydraulic accumulators for energy storage, shock absorption, and pressure stabilization, enhancing both system safety and performance.



On-Site **SERVICE**





HYDRAULIC SYSTEM COMMISSIONING & TROUBLESHOOTING

Our service division provides complete hydraulic system commissioning and troubleshooting, ensuring that every installation performs to its full potential. With a team of experienced hydraulic engineers and technicians, we handle both new system startups and existing equipment support.

Commissioning Services:

- Installation and alignment of pumps, valves, and power units
- Piping, hose routing, and system flushing to maintain oil cleanliness
- Pressure, flow, and functional testing of complete systems
- Safety checks, calibration, and control integration before handover

Troubleshooting & Support:

- On-site diagnostics for hydraulic failures and performance issues
- Identification of root causes such as contamination, cavitation, or component wear
- Quick replacement or repair of faulty components from our in-house stock
- System upgrades and retrofits for improved efficiency and reliability

By combining deep product knowledge with hands-on field expertise, we ensure minimal downtime, improved system life, and reliable operation. Whether it's a new installation or an existing hydraulic circuit, our team delivers the technical support needed to keep your system performing at its best.

HYDRAULIC HOSE, PIPING & FLUSHING SERVICES

We provide end-to-end solutions for the installation of hydraulic hoses, piping systems, and flushing operations, ensuring leak-free connections, system cleanliness, and long-term reliability.

Our expertise covers both new system setups and modifications to existing installations in industrial, marine, and mobile hydraulic applications.

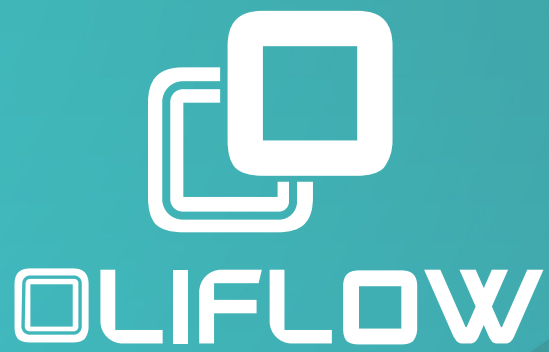
Scope of Services:

- Design and installation of hydraulic piping and hose assemblies
- Precision routing to minimize pressure losses and vibration
- On-site fabrication, welding, and assembly of hydraulic lines
- High-pressure flushing to ISO standards, ensuring oil cleanliness before commissioning
- Pressure testing and certification of hoses and piping systems

Key Advantages:

- Skilled technicians with experience in offshore and industrial projects
- Use of certified hoses, fittings, and connectors from trusted brands
- Compliance with international hydraulic piping standards
- Reduced downtime through clean, reliable, and robust hydraulic circuits

By combining proper installation with certified flushing, we deliver piping and hose systems that maximize hydraulic performance, extend equipment life, and ensure safe, trouble-free operation.



T: 91 16554645 6554 | E: huzefa@oliflow.com | W: oliflow.com

OLIFLOW HYDRAULIC EQUIPMENT L.L.C

Unit A-01, A-20, Um Althueub, Umm Al Quwain

AL ZARWAH HYDRAULIC REP L.L.C

Industrial Area 13, Sharjah

OLIFLOW INDIA

2nd Cross Bhagya Nagar, Belgaum

